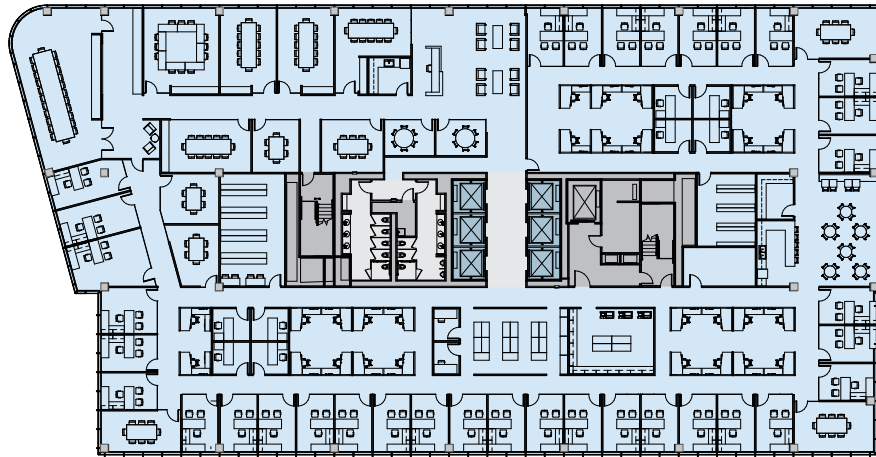


# SAMPLE FLOOR PLANS

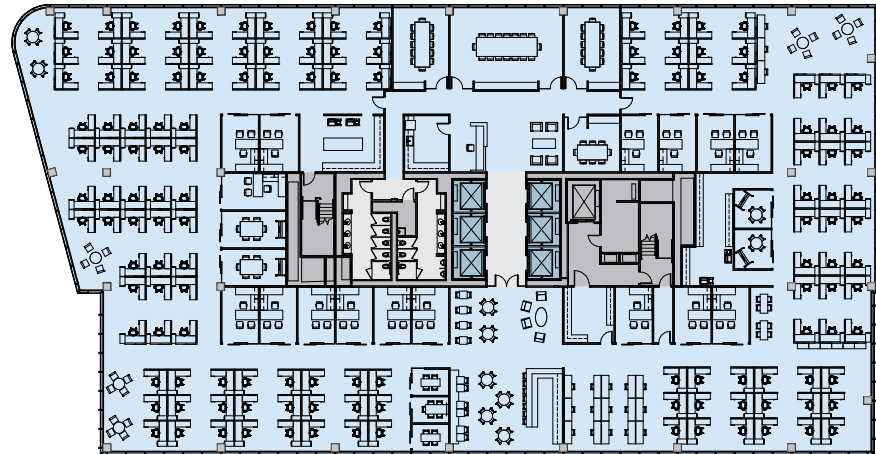
## Traditional Floor Plan

- 43 Perimeter Offices
  - 28 Workstations
  - 2 Boardrooms
  - 8 Conference Rooms
  - 5 Huddle Rooms
- 
- 72 Total People
  - 361 SF/Person



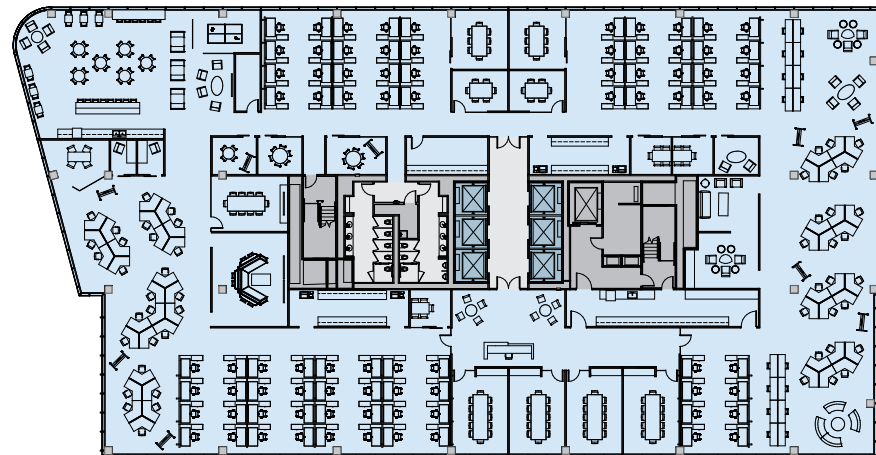
## Open Floor Plan

- 16 Offices
  - 137 Workstations
  - 15 Hoteling Stations
  - 1 Boardroom
  - 5 Conference Rooms
  - 5 Huddle Rooms
- 
- 172 Total People
  - 151 SF/Person



## Creative Floor Plan

- 131 Workstations
  - 16 Hoteling Stations
  - 4 Boardrooms
  - 5 Conference Rooms
  - 8 Huddle Rooms
- 
- 148 Total People
  - 175 SF/Person



## Leasing Information



Mark Irgens  
414.443.2520  
mirgens@irgens.com

Tom Irgens  
414.443.2531  
tirgens@irgens.com

Alyssa Geisler  
414.443.2580  
ageisler@irgens.com